



Fortified Island Militarisation, conflict  
and communities on Iron Age Bornholm



**DANMARKS FRIE  
FORSKNINGSFOND**  
INDEPENDENT RESEARCH  
FUND DENMARK

# Borge & Bebyggelse

- hvordan afkodes jernalderens  
bebyggelsesudvikling ?

*Bornholms Museum, d. 3. Februar 2024, ph.d.-stud. Anders Pihl*



**BORNHOLMS  
MUSEUM**  
Ét museum - fire unikke oplevelser

Kibsgaard  
Fonden



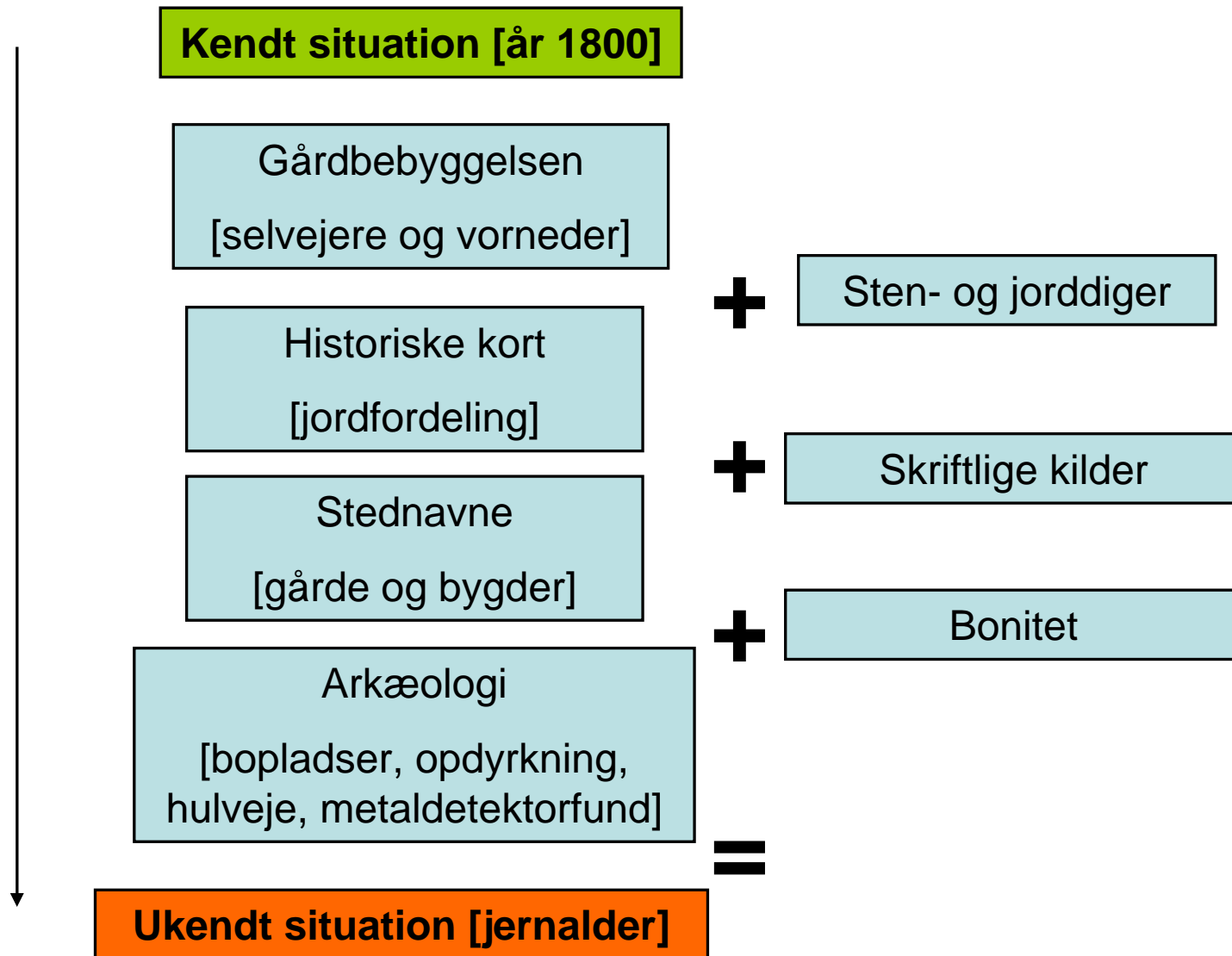


# Den historiske/middelalderlige bebyggelses særegenhed

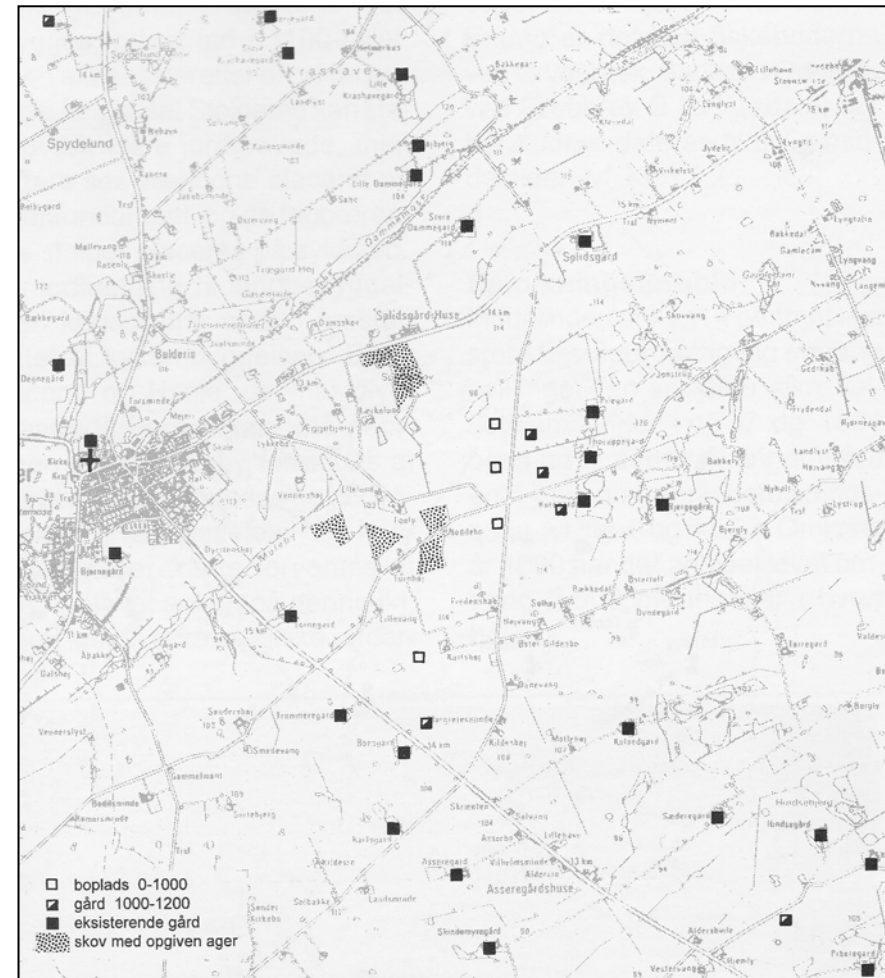
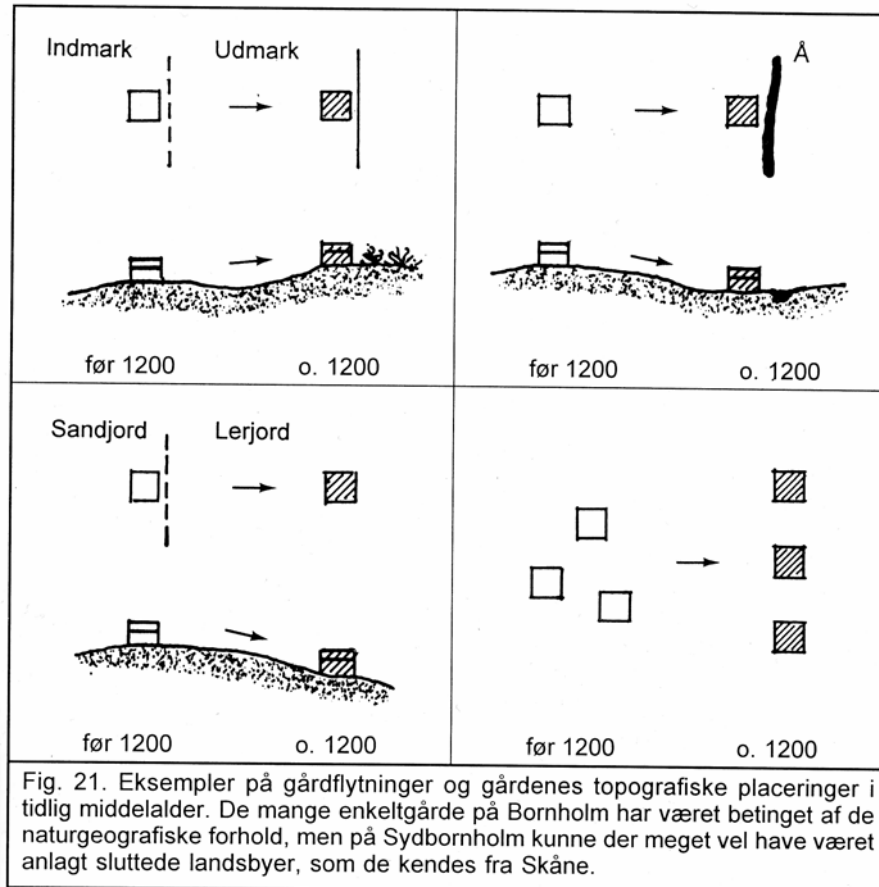
- Store ejerlav bærende sognenes navne
- Enkeltgårde uden landsbyer
- Mange ens gårdnavne, kun få ældre stednavne
- Sen udskiftning uden gårdflytninger =>
- Stationære gårde siden middelalder
- Organiseret i sognegilder
- Store udmarksområder



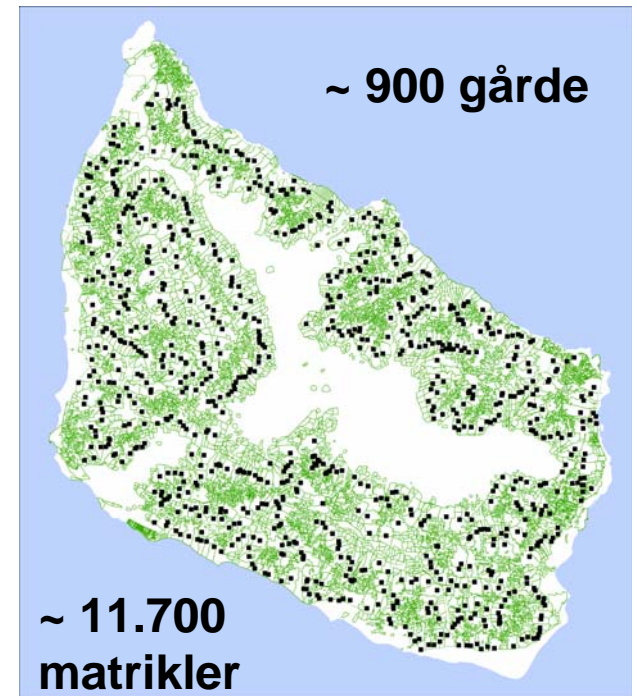
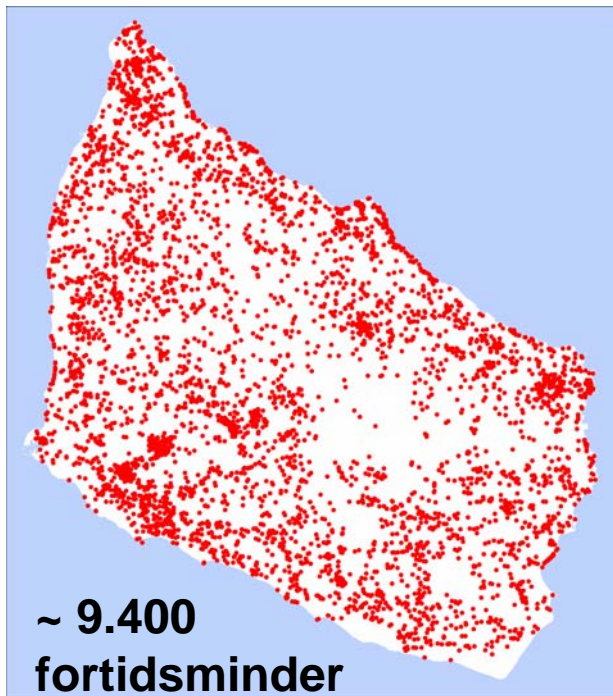
# Den retrospektive tilgang



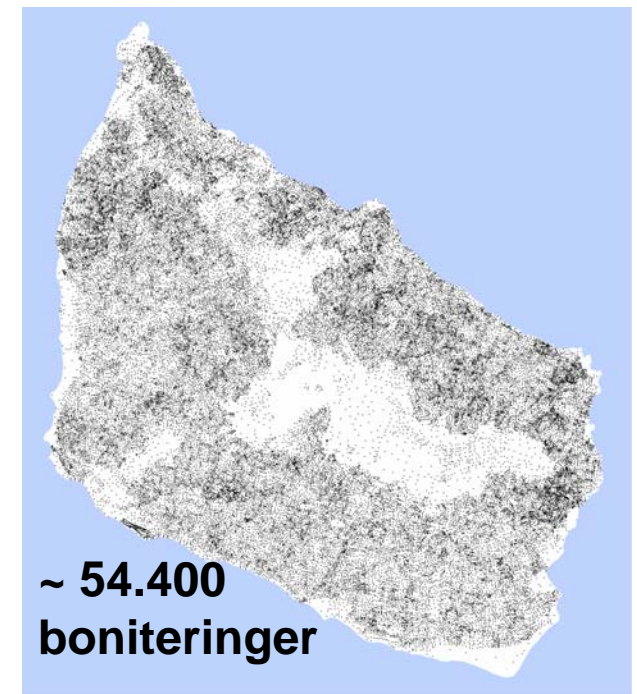
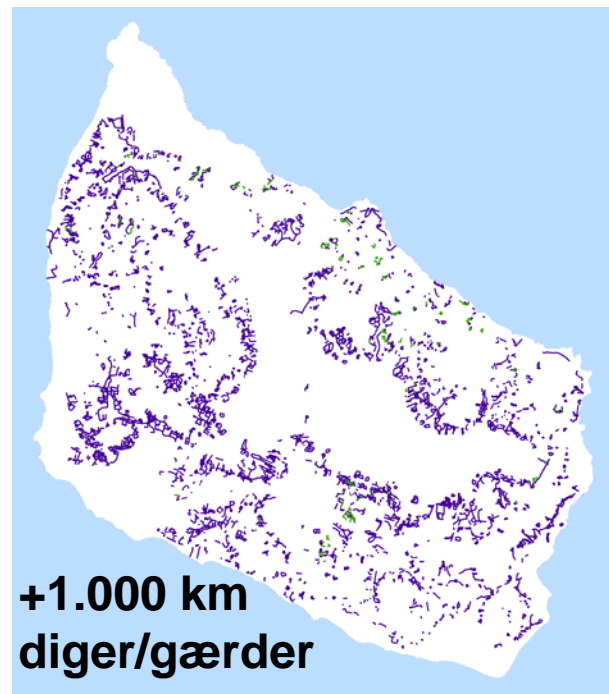
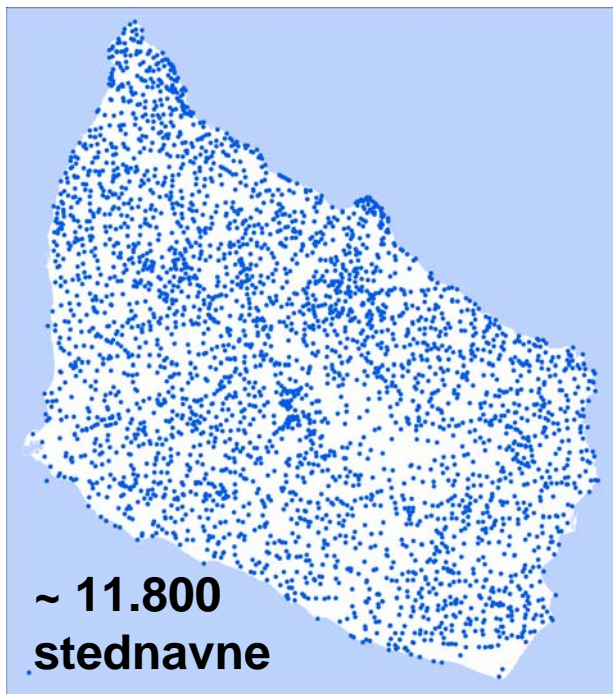
# Ikke en ny metode, men ...





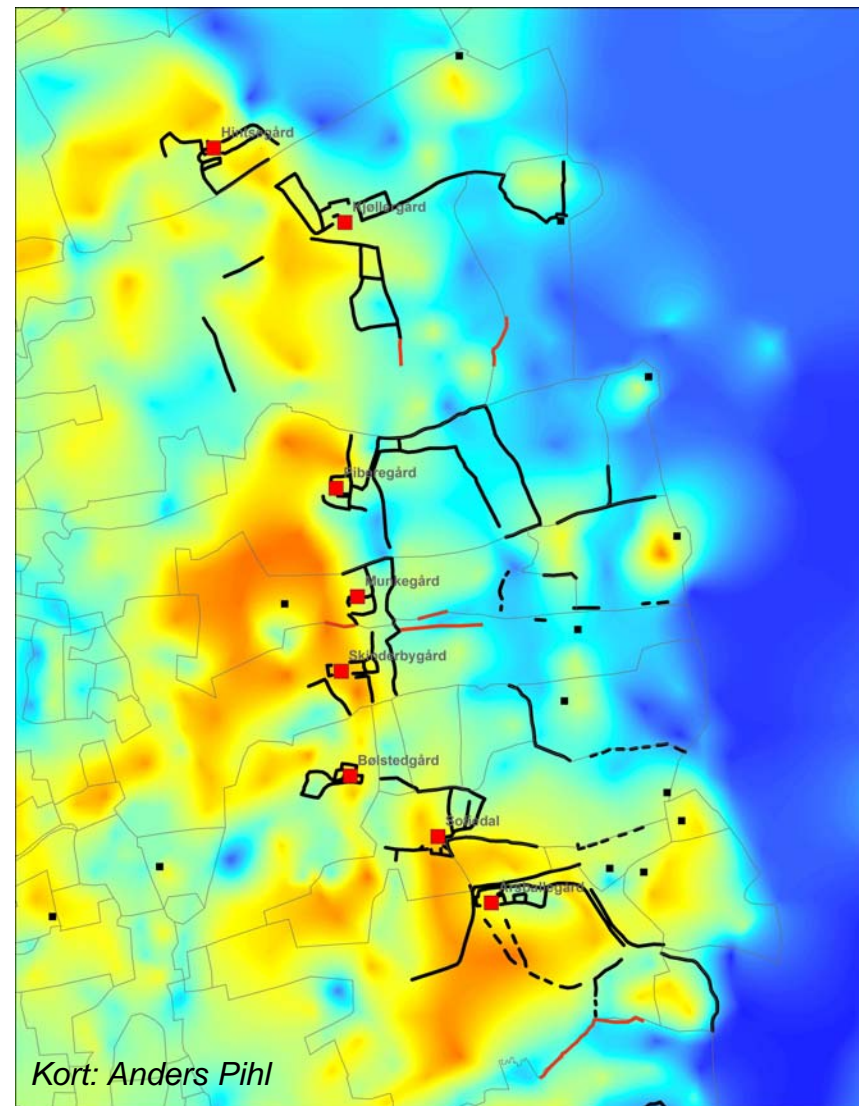
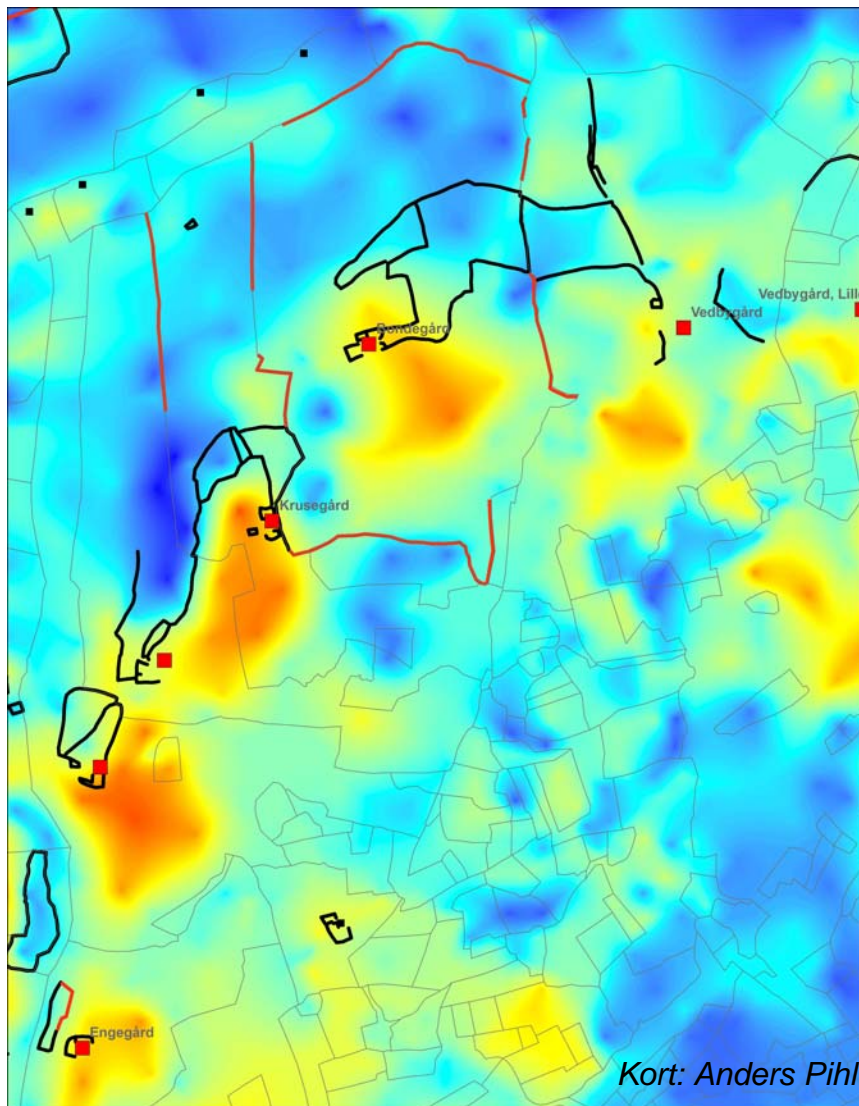


*Kort: Anders Pihl, FORTIS*





# Erfaringer gøres – Systemer opstår





# Åløse (2016)



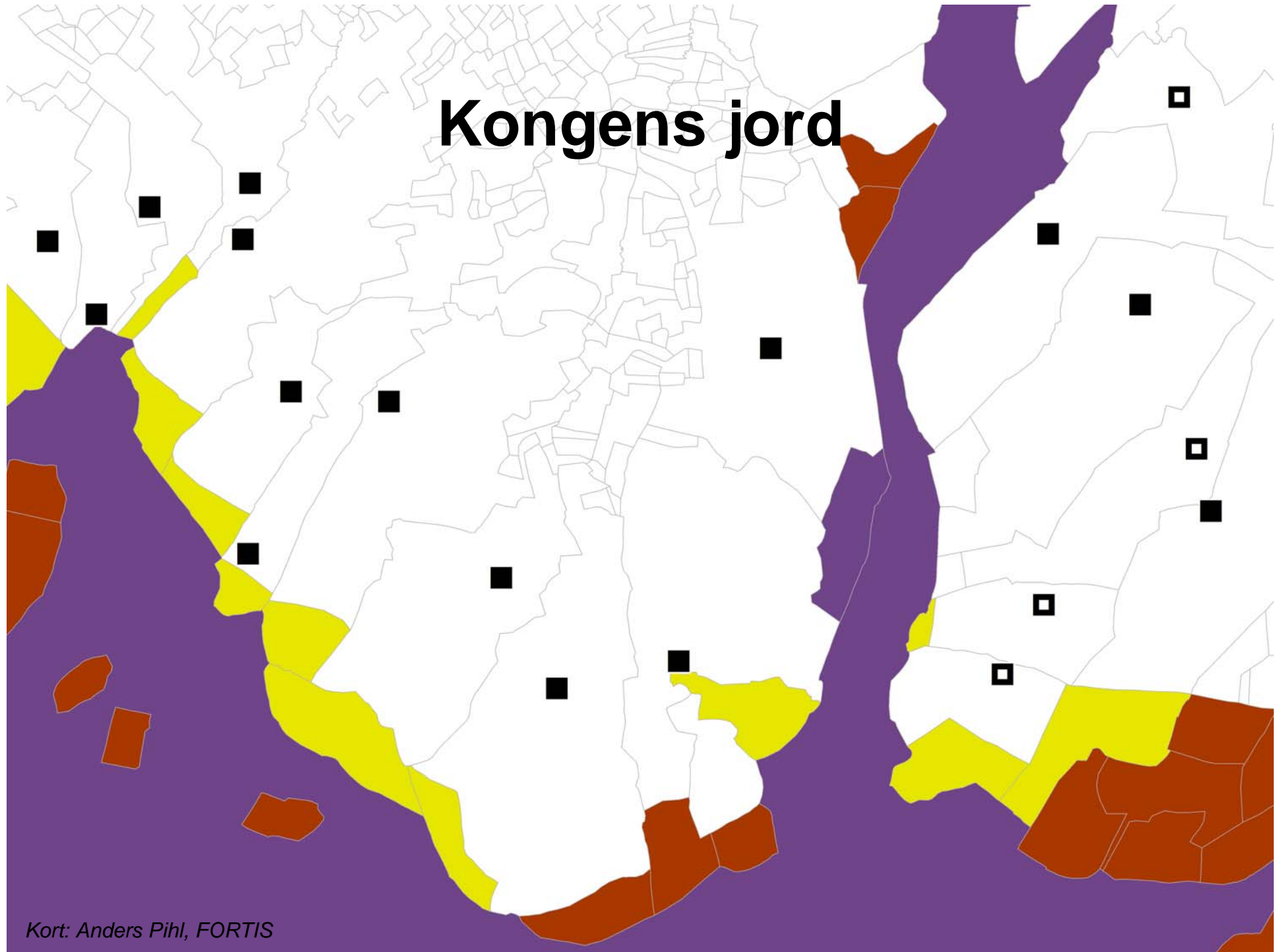
# Åløse (1816)



Kort: Anders Pihl/SDFI



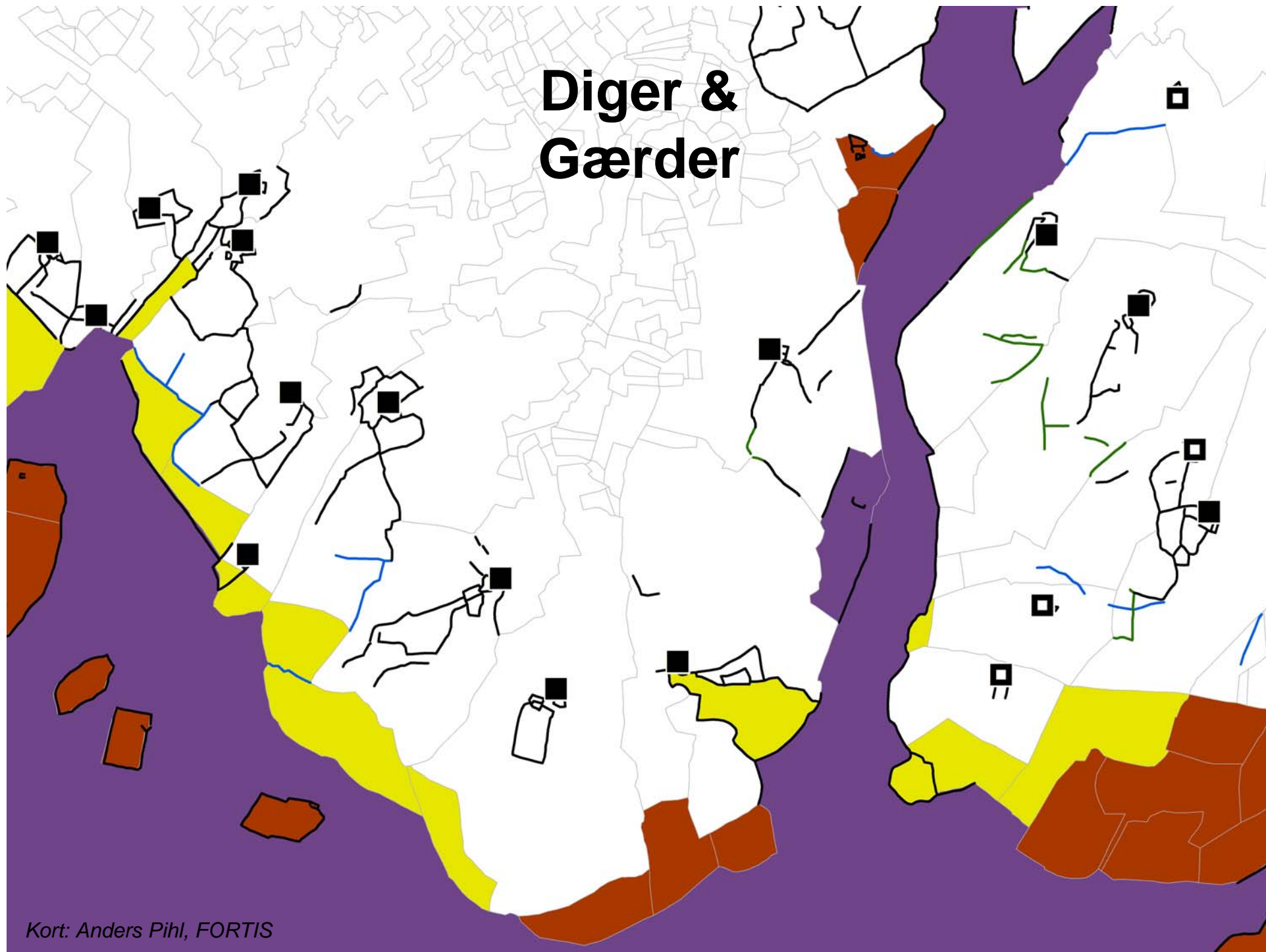
# Kongens jord



*Kort: Anders Pihl, FORTIS*

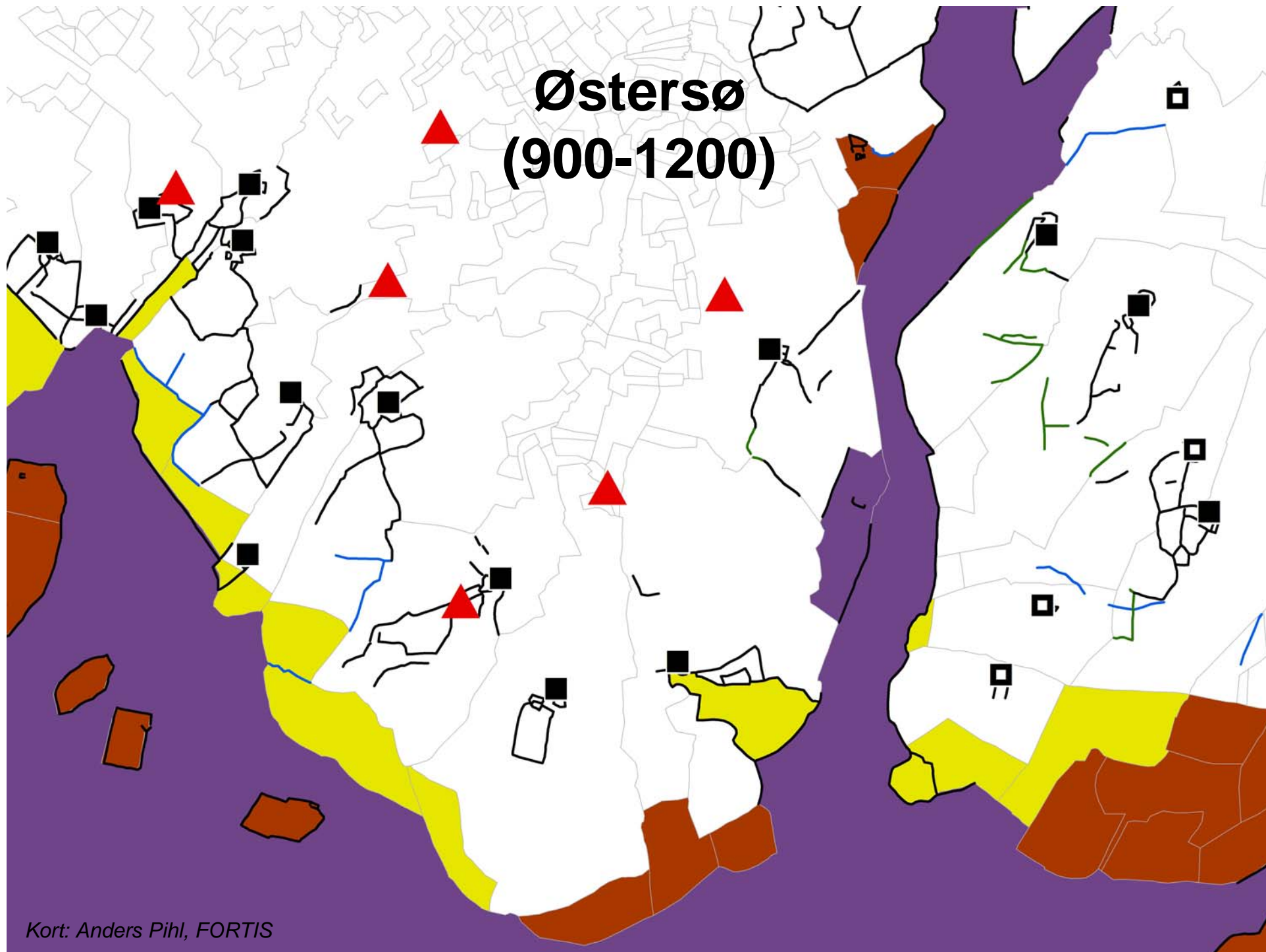


# Diger & Gærder



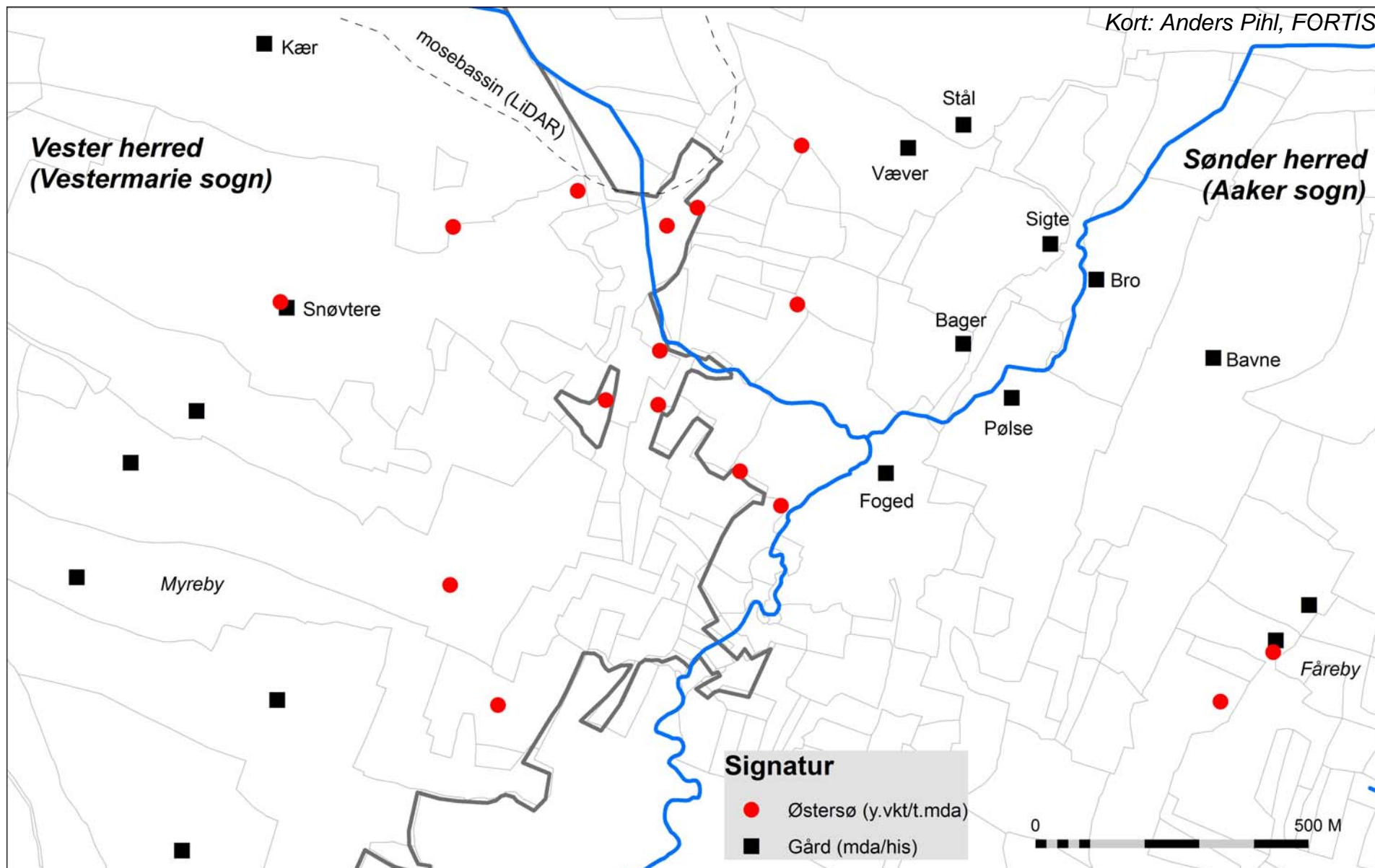
Kort: Anders Pihl, FORTIS

# Østersø (900-1200)





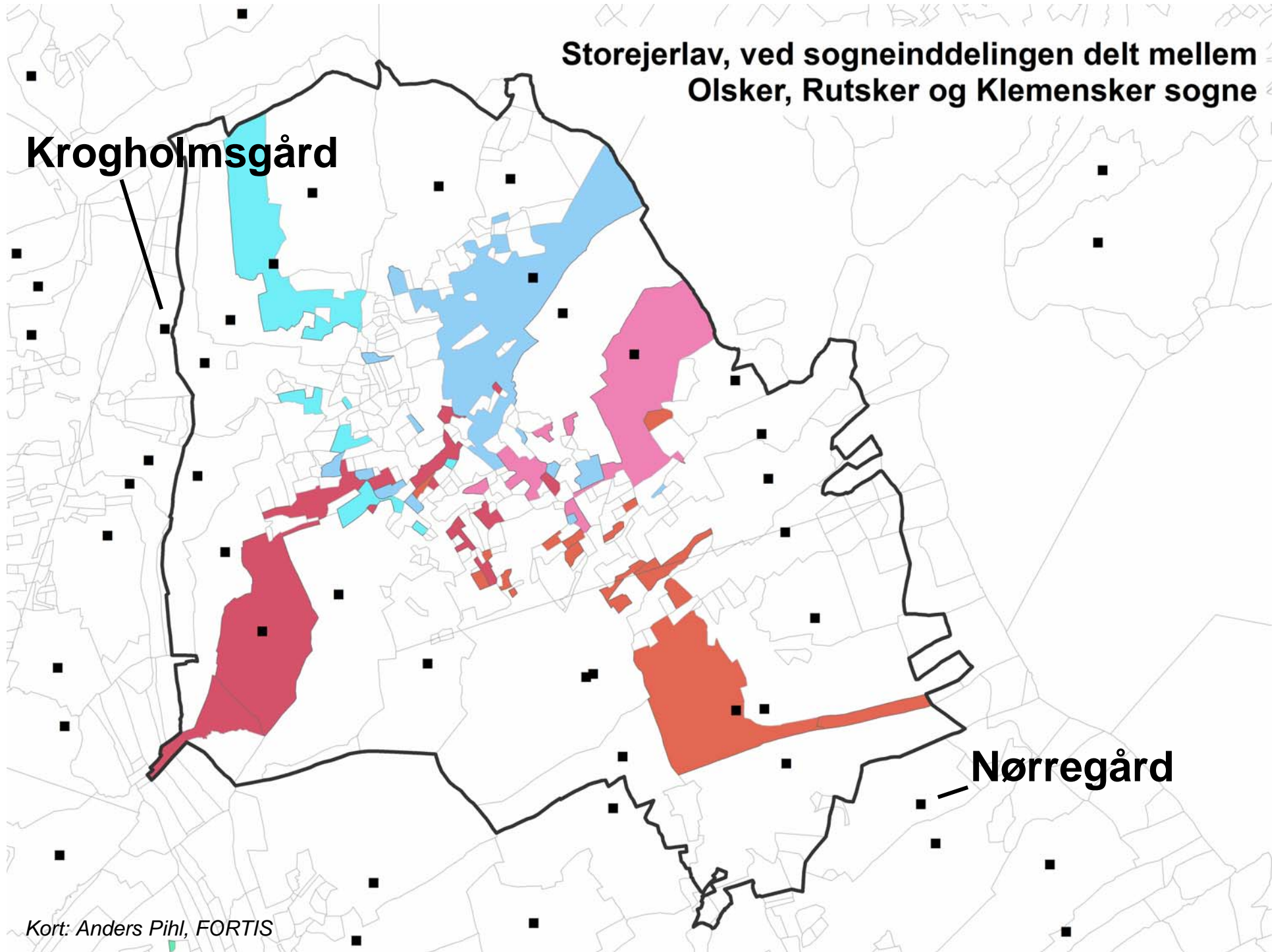
# Samme system – andre grænser



**Storejerlav, ved sogneinddelingen delt mellem  
Olsker, Rutsker og Klemensker sogne**

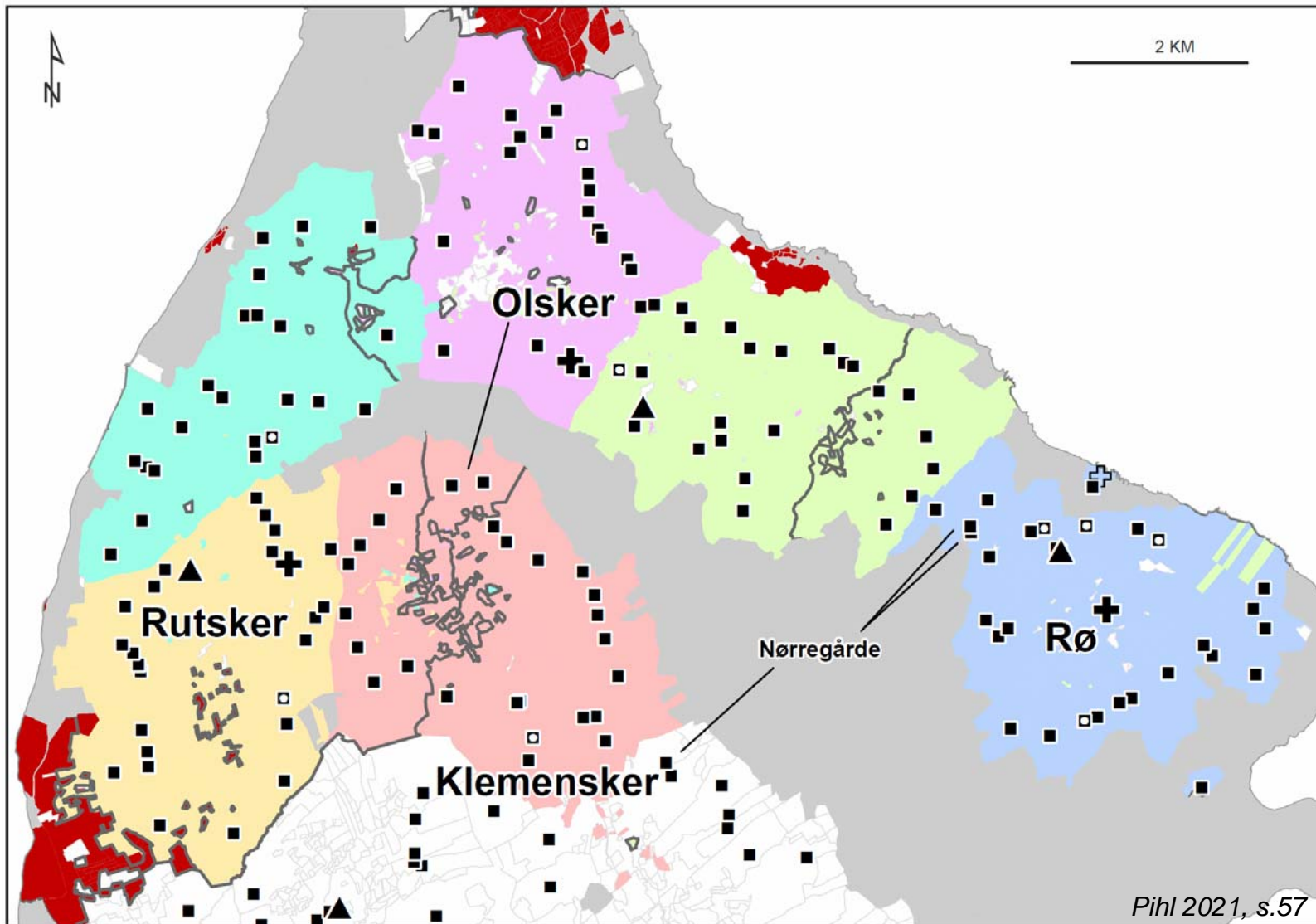
**Krogholmsgård**

**Nørregård**

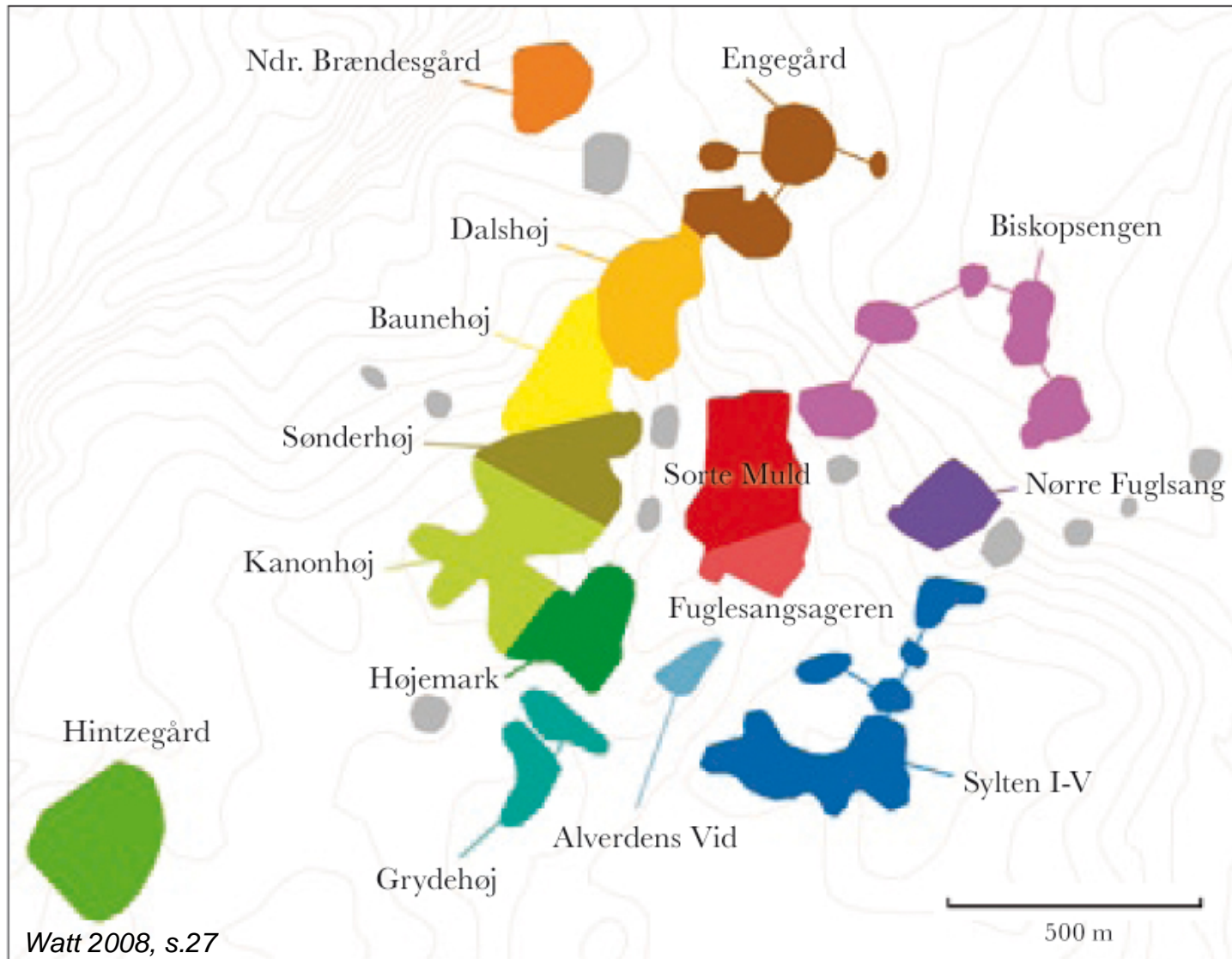




# Ældre struktur - alder?

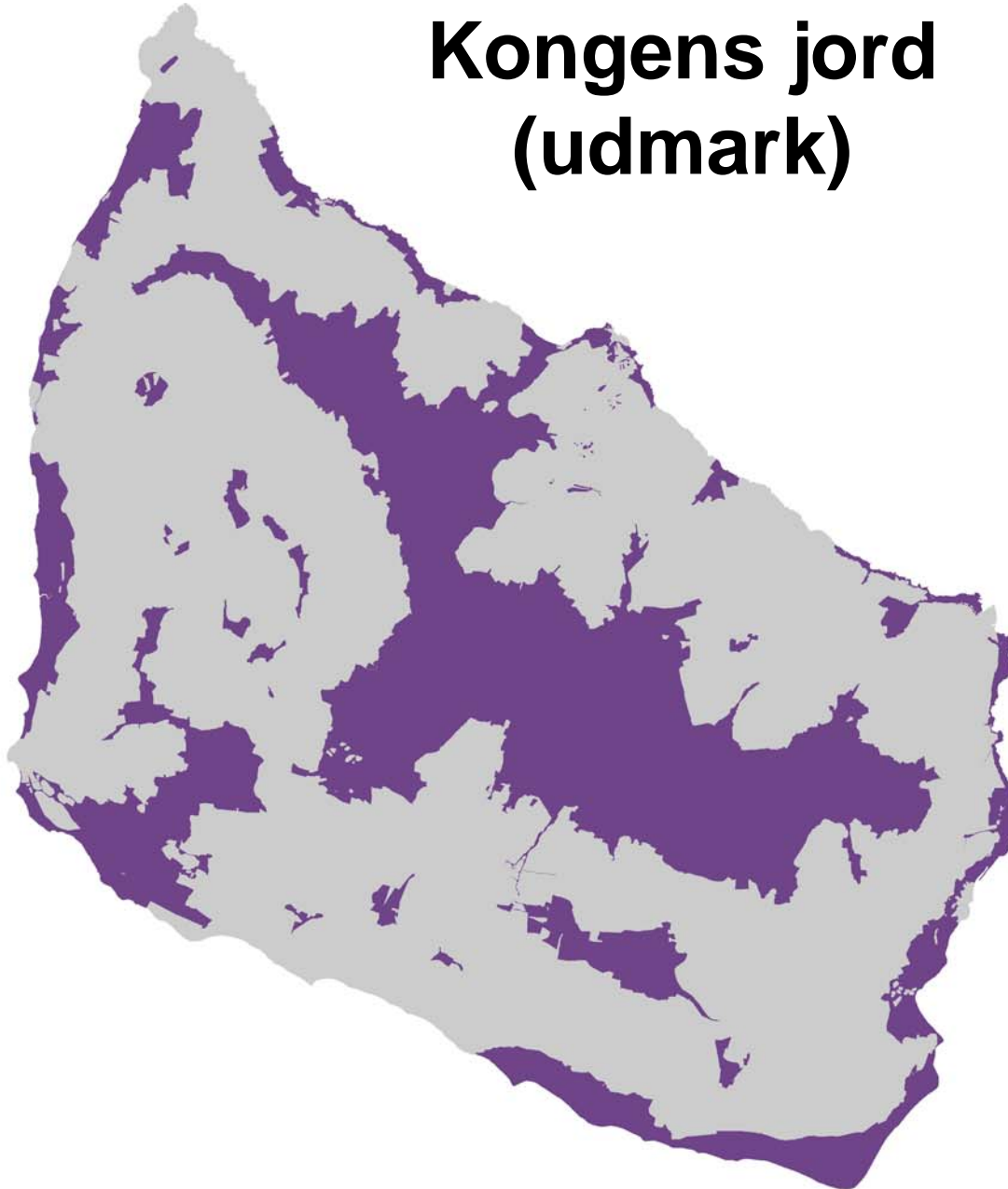


# Sorte Muld – en skabelon ?



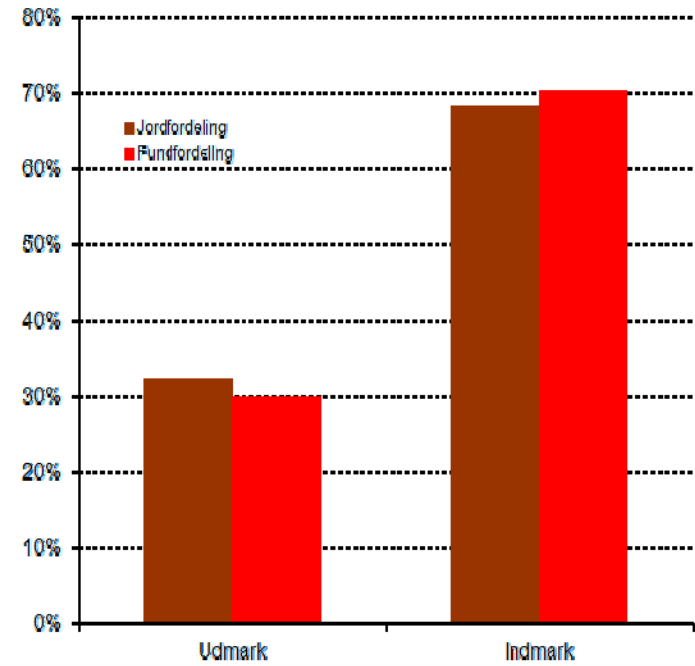


# Kongens jord (udmark)

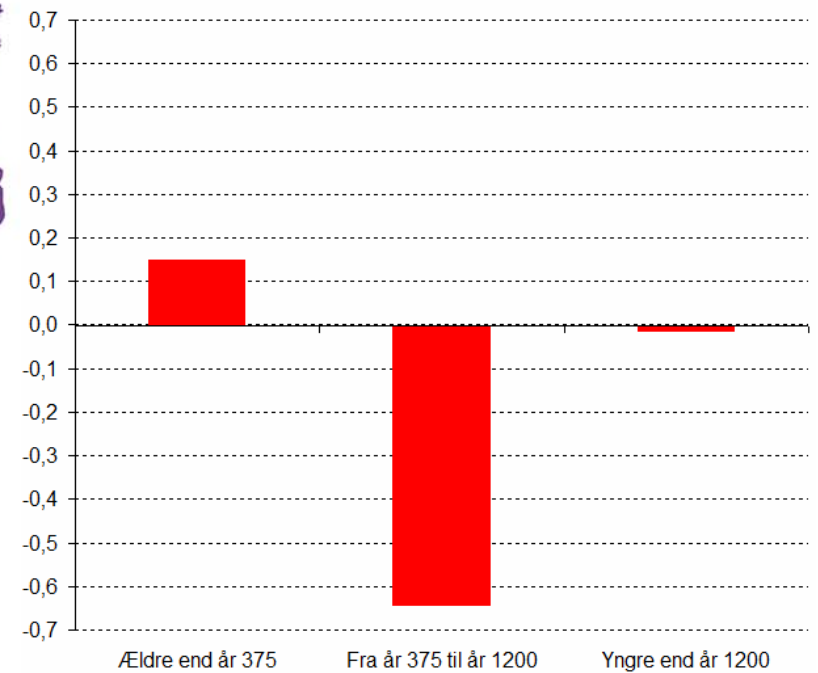


Kort: Anders Pihl, FORTIS

Kongens Jord i forhold til arkæologiske fund



Over-/underrepræsentation for fund på Kongens jord







FORTIFIED  
ISLAND

— mød forskerne



MILITARISATION, CONFLICT  
AND COMMUNITIES ON IRON AGE BORNHOLM

**Tak for  
opmærksomheden**

[anders.pihl@natmus.dk](mailto:anders.pihl@natmus.dk)